

Statesman

December, 1971 No. 48

THE STAFF MAGAZINE OF THE STATE SAVINGS BANK OF VICTORIA.

THE
STATE SAVINGS BANK
OF VICTORIA



Statesman

Managing Editor
TREVOR S. CRADDOCK

Editor
BILL PATEY

Associate Editor
JOAN FREEMAN

FRONT COVER
A "Mary" Christmas mood was captured by Mary Henderson of Staff Department when she posed with our new S.S.B. Santa Bank money boxes. These little Santa figures were originally devised for a TV commercial (which subsequently won an award)—and were mass-produced as plastic money boxes in response to public demand.

STATESMAN is produced at two-monthly intervals by the Marketing Department of the State Savings Bank of Victoria. Comments from the staff on the contents of Statesman are invited. The editorial team will always welcome suggestions for future articles and pictures, letters for publication, and news of staff activities likely to interest fellow officers.

All correspondence and contributions should be addressed to Statesman, Marketing Department, S.S.B. Head Office, 139 Elizabeth Street, Melbourne.

CHAMPION HOUSE PROJECT

First Split-Level Branch



● ARTIST'S CONCEPT of the new, \$2½ million Champion House project, which will house our first split-level branch.

Our second largest branch, at 45 Swanston Street, will be completely rebuilt as part of the \$2½ million Champion House rebuilding project, now under way.

The new banking premises will occupy a substantial part of the ground and first floors of a modern, 14-storey building of air-conditioned offices and shops, which will rise to a roof height of 150 feet.

This will be our first split-level banking office. It will comprise some 7600 square feet of space — almost double the size of the existing premises.

Facilities for customers and staff will be greatly expanded and improved.

Main entrance to the branch will be at the corner of Swanston Street and Flinders Lane. Escalators immediately inside the entrance will take customers to the first floor.

Tellers (probably six) and an inquiry counter will operate on the ground floor, which will have marbled walls, and large windows along the Swanston Street frontage overlooking the City Square.

The main group of about 12 tellers will operate in the main chamber on the first floor, which will also house the managerial suite and numerous inquiry counters. The chamber will be carpeted throughout,

and its Swanston Street frontage will be glass — overlooking the City Square.

18 Tellers — no waiting

The new total teller strength of approximately 18 will present a 50% increase on present facilities, and will substantially reduce waiting time for customers at peak periods.

Normal business will continue at 45 Swanston Street during the rebuilding program, and will later involve a temporary shift into the newly-constructed ground floor shop section.

Offices and shops will be available for letting in mid-1973.

The development is being carried out by the S.S.B. Commissioners in conjunction with Grosvenor International, an Australian-based company with property interests also in the U.K., North America and Hawaii.

Architectural design is by Buchan, Laird and Buchan Pty. Ltd., of South Yarra. Engineers are John Connell and Associates. Builders are Lewis Construction Co. Pty. Ltd., of North Melbourne. Project coordination is by Grosvenor International.

SECURITY STOP PRESS

First in Australia!

WE TEST NEWEST TV 'BANDIT DETERRENT'

The Bank has been testing a revolutionary TV videotape device to deter and detect bandits.

New equipment (specially flown in from Japan for S.S.B. trials), makes a daily 7-hour "movie" of all comings and goings in a banking chamber.

A small TV camera with a wide-angle lens is mounted high on a back wall of the bank office. It does not have to be activated by staff — except to be switched on at opening time, and off at the end of the day's trading.

It takes continuous pictures of everyone approaching the counter. These pictures are recorded on a videotape machine concealed in a cupboard. Simultaneously a TV monitor screen in the manager's office (or elsewhere behind the scenes) shows the pictures which are being taped.

In the event of a hold-up the system would record the action from the point at which the bandits entered the bank.

After the raid the movie could be replayed instantly on the monitor set.



A SIMULATED HOLD-UP was staged at Deepdene branch during tests of the new videotape equipment. Moving pictures, taken by a TV camera at the back of the office, appeared on this monitor screen in the manager's room. At the same time, the action was recorded on videotape — ready for instant replay.

Police could study the pictures in slow motion or as a series of still frames. Polaroid photographs could be taken of still pictures and distributed to police. The videotape recording could be rushed to a TV station and telecast to the public.

The new videotape machine is the only model in Australia capable of recording continuously for seven hours at a time. It runs on ½-inch tape, compared with the 2-inch tape used by TV stations.

S.S.B. tests began on November 19 at Deepdene branch — scene of a recent hold-up.

When this edition of Statesman went to press, the Bank executive was still evaluating, in conjunction with the police, results of the tests. No decision had been taken on purchase of the new equipment for selected branches.



TV CAMERA, with wide-angle lens trained on counters, operates continuously all day from inaccessible position on back wall of office.

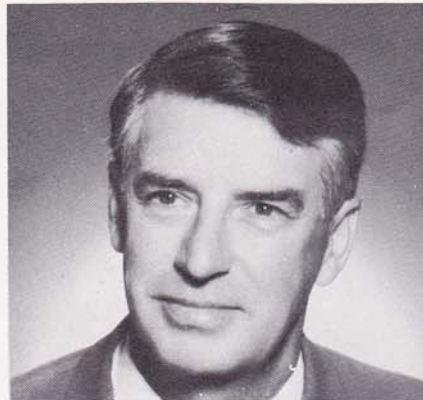


HIDDEN RECORDER makes a continuous 7-hour videotape of all comings and goings in the banking chamber — including hold-ups.

THE MEN WHO RUN THE BANK

Commissioners

The S.S.B. is not a government department. It is an independent corporation, guaranteed by the Government of Victoria, and run by a government-appointed Board of Commissioners. The seven Commissioners meet fortnightly to make Bank policy and carry out other duties prescribed by the Savings Bank Act (No. 6379).



CHAIRMAN

Professor Donald Cochrane, Ph.D., B.Com., the present Chairman of Commissioners, is one of Australia's best-known economists. After leaving Melbourne High School he took the Bachelor of Commerce degree at the University of Melbourne — and subsequently attended Clare College, Cambridge, where he was awarded the degree of Doctor of Philosophy. During World War II he was a Flight Lieutenant navigator in the R.A.A.F. Since 1961 he has been Professor of Economics, and Dean of the Faculty of Economics and Politics, at Monash University. Golf is Professor Cochrane's favorite recreation, and he is a member of Green Acres and Peninsula Clubs. In 1946 he married the pianist Margaret Schofield.



DEPUTY CHAIRMAN

Sir John Anderson, C.M.G., is the proprietor of a Melbourne company of importers and agents, managing director of King Oscar Fine Foods Pty. Ltd., and a director of Victoria Insurance Company Ltd. and Bly's (Aust.) Pty. Ltd. In World War II he served in the A.I.F. with the 2/6 Commando Company and the 1 Australian Paratroop Battalion, and saw active service in the south-east Pacific area. He was knighted in 1969. For recreation, Sir John plays tennis or enjoys a day at the beach — surfing, swimming or fishing.



Mr. Reginald Hoban, LL.B., is a solicitor practising at Kilmore, and was a member of Kilmore Shire Council for 31 years and was twice shire president.

He has been an S.S.B. Commissioner since 1953.

Mr. Hoban was born at Alexandra, and was educated at St. Kevin's C.B.C., Melbourne.

Racing is one of his favorite recreations. He is president of the Kilmore Turf Club and vice-president of the Kilmore Trotting Club. He is an avid supporter of Richmond V.F.L. side. Other interests include reading and swimming.



Sir Arthur Smithers, C.B.E., A.A.S.A., was the Victorian Director of Finance for 22 years prior to his retirement from this post in 1959. Born in Echuca, he was educated at Prahran College, and joined the State Treasury in 1911.

Sir Arthur is chairman of Southern Cross Properties Ltd. which owns the Southern Cross Hotel. He is interested in the theatre and music and is a director of the Elizabethan Trust and a member of the Council of Trustees of the National Gallery.

He is on the Committee of Management of Royal Melbourne Hospital.



Mr. Ernest Coates, C.M.G., B.Com., has been the Director of Finance, Victoria, and Permanent Head of the Treasury since 1959. He has been a member of the National Debt Commission since 1963 and a member of the Australian Universities Commission since 1968. Born at Ballarat, he was educated at Ballarat High School and the University of Melbourne. He has been a Commissioner of the Bank since 1960. Mr. Coates is a Trustee of the Shrine of Remembrance and a member of the committee of the Melbourne Cricket Club. For recreation he enjoys reading and golf, and is a member of Green Acres and Peninsula Clubs.



Mr. William Kirkhope, O.B.E., F.C.A., is the senior partner in Melbourne of the firm of chartered accountants Hungerford, Spooner and Kirkhope. He is chairman of two public companies — Mayne Nickless Ltd. and Kauri Holdings Ltd. — and a director of several others. Mr. Kirkhope was described in the book "Practising Accountants in Australia" as "among those who have made outstanding contributions to Australian business and have their origins in the discipline of Accountancy." A keen golfer, he is a member of Green Acres and also of Coves, where he has a beach home.



Mr. Ian Morton, B.Com., has been chairman of the Rural Finance and Settlement Commission of Victoria since 1963, and is a member of the Victorian Inland Meat Authority.

Born in Kerang, he worked on his father's property there, and later on properties in the Riverina.

Mr. Morton served in the Second A.I.F. as a sergeant in 7th Division Signals.

He is chairman of the council of Penleigh Presbyterian Ladies College. He is a keen fisherman and duck shooter.

THE MEN WHO RUN THE BANK

Top Executives



resentation ceremony,

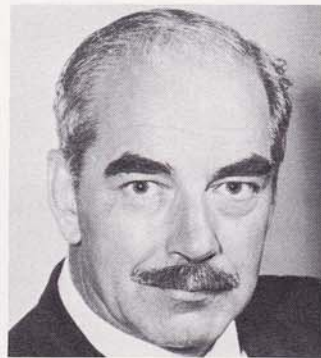
Mr. Thomas Hall (left) joined the Bank in 1924 as a junior clerk at Gardenvale. He became Secretary in 1957 and on several occasions acted as Assistant General Manager. He was appointed GM in 1962.

ASSISTANT GENERAL MANAGER

Mr. Don Ross (right) joined the Bank in 1928 as a junior clerk at Geelong. He studied savings banking in USA and Canada in 1959, became our first Mechanisation Manager in 1960 and was appointed AGM in 1962.



Mr. Neil Kelly joined the Bank in 1927 at Surrey Hills. After various head office appointments he became a District Inspector in 1959, and Assistant Chief Inspector in 1963. He was appointed Chief Inspector in 1965.



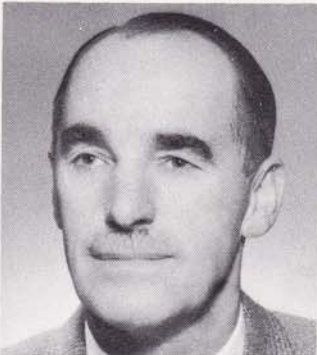
Mr. Harry Torrens joined at Northcote in 1939, was appointed secretary to the GM in 1955, and re-opened London Agency in 1959. Returning to Australia he became a District Inspector, then Secretary, and CA in 1965.



Mr. Paul Costelloe joined the Bank at Brunswick in 1924. He spent 31 years in branches, culminating in managership of Elizabeth Street, and was appointed Staff Superintendent in 1967.



Mr. Trevor Craddock, a dozen but Mr. Craddock came from the "Wales" to this Bank as our first public relations officer in 1957 — later incorporated the advertising function and became Chief Manager, Marketing in 1970.



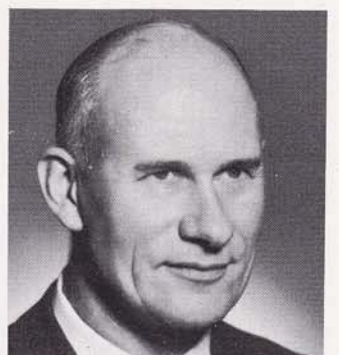
ASSISTANT CHIEF INSPECTOR: Mr. Tom Paige joined the Bank as a junior clerk at Balaclava in 1928. He became Secretary to the GM in 1960, Secretary to the Commissioners in 1963, and Asst. Chief Inspector in 1965.



ASSISTANT CHIEF ACCOUNTANT: Mr. Ron Cummins joined the Bank as a junior clerk at Prahran East in 1924. He became Manager of Printing and Stationery in 1960 and was appointed Asst. Chief Accountant in 1965.



ASSISTANT STAFF SUPERINTENDENT: Mr. Ron Wade joined the Bank as a junior clerk at Warrnambool in 1929. He became an Inspector in 1958 and was appointed Asst. Staff Superintendent in 1965.



SECRETARY TO THE COMMISSIONERS: Mr. Arnold Atkinson joined the Bank as a junior clerk at Kilmore in 1932. He was appointed to the Chief Accountant's Department in 1939, became a District Inspector in 1963 and Secretary to the Commissioners in 1965.

NEXT ISSUE: The Bank's Top Departmental Heads and Managers . . .

St. James branch will be first 'on-line'

Fully computerised on-line accounting will be launched at St. James (551 Bourke Street, city) branch in February. Other city and suburban branches will follow throughout next year.

Meanwhile, to ease and simplify the transition to on-line operation, a new form of computer print-out material is being gradually introduced to centralised branches, starting with St. James and 186 Bourke Street branches.

Daily ledger and inquiry list sheets are changing slightly. The "anticipated interest" calculation 12 months in advance is being replaced by current interest calculations to the end of the previous month. This brings centralised branches into line with non-centralised branches.

Warning: Under the new system it will be necessary for branches to check their computer-printed ledger sheets against the relevant vouchers, punched paper tapes and summaries — and to make any necessary corrections. (Under the existing system, most errors are picked up by manual checkers in EDP Operations Department. This will be possible when Olivetti terminals feed directly into computers.)

It is expected that the new methods will, in general, simplify accounting procedures at our branches.

We received late in October six sample Olivetti teller machines, and

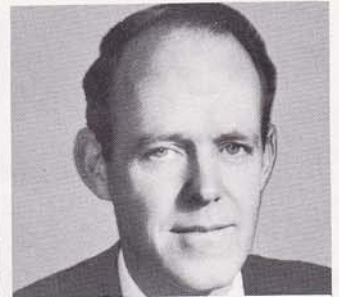


ST. JAMES, 551 Bourke Street, will be our first on-line branch. Its teller machines will be directly linked to head office computers. Pam Marks (left) could be our first O.L.O.O. (On Line Olivetti Operator).

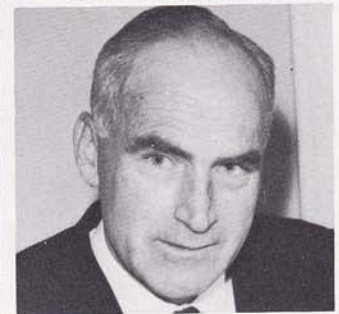
these have been tested intensively in recent weeks.

New computer arrives

Late last month we took delivery of the second of our two on-line computers — a System 4/70 unit—and this has given new impetus to on-line testing.



ROSS STRANG, EDP Planning Manager, has steered the new computer system which will underpin our whole on-line operation.



MAX BOLTON, Branch Mechanisation Manager, is responsible for converting branches through various stages — from manual to mechanised to centralised to on-line.

Special underground channels to carry incoming PMG computer signal lines were recently brought into head office from Bourke Street. An outlet point was installed on the mezzanine floor.

Summing up: The S.S.B. on-line schedule is well advanced, and right on target.

WORLD'S FASTEST SAUSAGE EATER?



Meet the fastest sausage-scoffer in Australia and possibly the world: Les Hanford, of our Head Office Mortgage Loans Department.

Les was photographed on the roof of McEwan's store in Bourke Street during a sausage-eating contest last month. He consumed a 3-foot length of barbecued sausage in the record time of 63.1 seconds, defeating 80 other competitors, including several girls.

His prize: a 4-day cruise in the P & O liner Iberia next month.

Footnote: Les, who is 30 and married, with two children, admits to being "a bit keen" on sausages. He tackled a sausage meal at home on the day following McEwan's "Snagathon".

E.D.P. PLEA

Branch staffs can assist EDP Operations Department by taking special care in removing coupons from Christmas and Calendar Club books.

If coupons are torn out leaving uneven edges and gaps, the computer reading machines may reject or misinterpret them.

This problem usually happens because more than one coupon is torn out of a book at a time by the teller.

Of course, one way to avoid multiple payments and multiple "tearings" is to persuade depositors to take out books of twenty-five \$2 coupons — instead of books of fifty \$1 coupons. This means less work all round.

GIRL OF THE MONTH



Marie Andjelkovic (rhymes with angelic)—20-year-old teller at North Geelong branch—was recently crowned MISS GEELONG, 1971. For the presentation ceremony, Marie designed and made her own outfit: "a pink daydream chiffon gown featuring guipure lace bodice beaded with crystals."

Her ambition is to become a successful fashion designer, and she predicts a rosy future for hot pants: "They will be THE thing for summer beach wear, and will be seen just about everywhere. They are more practical than mini skirts (which will continue to be popular for quite a while) and are very flattering to the slim figure."

Marie's favorite things: "glorious food . . . beautiful clothes and jewellery . . . beautiful old houses and antique furniture . . . going out to dinner." Her pet hates: "Monday mornings . . . diets . . . football telecasts on all channels simultaneously."

Our Miss Geelong has a steady boy friend—and a comprehensive list of qualities she would seek in a husband: "rugged, fun-loving, kind, understanding, loving, romantic, tolerant, charming — and able to put up with me."

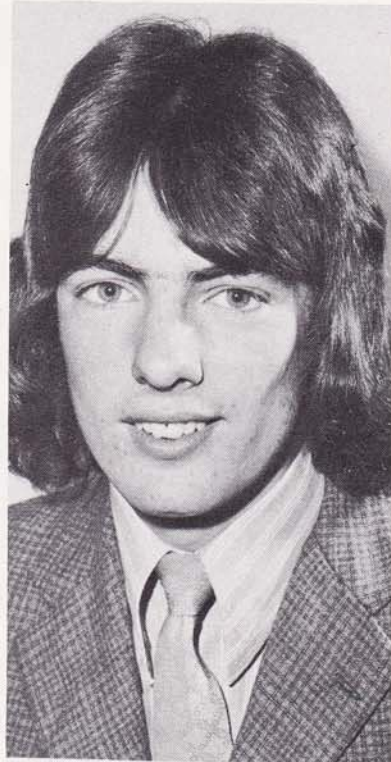
Here is Marie's horoscope: "The Taurus girl, ruled by Venus, is endowed with a love of beauty and harmony. She secretly desires the good things of life, and is willing to work very hard for them. She has a certain glow that attracts the opposite sex easily. Is capable of recognising authority, and working to set specifications — therefore does well in the civil service or commerce fields. She is most in tune with Virgo and Capricorn subjects."

MAN OF THE MONTH

Stuart Oddy, 17-year-old clerk at Essendon branch, is very big in Scouting and Soccer. He came to Australia from England with his parents in 1966 and joined the Bank a year ago. Stuart recently received his Queen's Scout Certificate from the Governor, Sir Rohan Delacombe, at a Government House ceremony. (There are about 2000 Queen's Scouts in Victoria; the award is based on obtaining a large number of scouting badges, and on proof of responsible citizenship.) Stuart is the first Queen's Scout of 2nd Keilor-Tullamarine Scout Group.

He plays Soccer with the U.S.C. Lions reserve side, and formerly captained the under-17 side for three years — winning the best-and-fairest award each year. Stuart's ambition is to become a professional footballer in England.

He has no regular girl friend at present. His horoscope says: "The young Gemini man is lean and restless. He enjoys travel — new places, people and ideas. He is a fast thinker and a good talker, with a large vocabulary. Emotionally changeable, he alternates between joy and gloom, but is not basically bad-tempered. Only tiredness makes him grumpy. Most likely 'compatibles' are Aquarians and Librans."



STATE SECRETS by the teller

NEWLYWED housewife presented her husband's pay cheque for payment. Teller explained that she would have to endorse it. The girl looked thoughtful for a moment, then wrote on the back of the cheque: "My husband is a wonderful man (Signed) Shirley Jones."

WHO was the teller who found a strange discrepancy — a shortage of \$10 in her \$20 notes?

DURING renovations at Kerang branch an elderly depositor pointed to a maze of air-conditioning ducts being installed in the ceiling and asked "What's that?" Teller jokingly replied "That's our new money-making machine." Depositor believed him, and asked for a demonstration.

BOOKS that invariably have a sad ending: cheque books.

WHO was the north suburban junior clerk who, on his first day, was sent out for a dozen Form Forty of various types and colors? He returned with a dozen bottles of beer of various brands and labels.

AMERICAN newlyweds received from their bank their very first mortgage loan instalment card — produced by a computer. The prestigiously punched card showed the amount due, and a bold message reading "YOUR PAYMENT RECORD HAS BEEN VERY GOOD."

TALKING about computers . . . Do you realise that it would take 50 people working day and night for 200 years to make the same mistakes a computer can make in only two seconds?

TEETOTAL teller says in all seriousness that he will not let his son join the scouts. "Haven't you noticed all those beer bottles stacked up behind scout halls?" he says.

BRANCH manager, when asked if he and his wife did much swimming in summer, replied: "No. I'm bow-legged and she's knock-kneed. When we walk side by side in our swimsuits we look as if we are saying OK."

WHO was the officer up Ballarat way who went to lunch at 11 a.m. — an hour earlier than usual — and gave the excuse of "daylight saving" several days before daylight saving started?

DISPLAYS . . . current and coming

Here is a list of displays planned for the Elizabeth Street banking chamber during the next 6 months — and for various suburban branches between now and Christmas:

ELIZABETH STREET DISPLAYS

- 1/12/71: Christmas Club Payouts
- 10/12/71: Christmas Club
- 8/1/72: Cable Trams, Melbourne
- 29/1/72: Fisheries and Wildlife
- 12/2/72: Sovereign Hill Park (Ballarat historical)
- 1/3/72: Cake Decorating
- 18/3/72: Overseas Telecommunications
- 8/4/72: Vintage Motor Bikes
- 29/4/72: Department of Supply
- 20/5/72: Royal Institute for Blind

BRANCH DISPLAYS — December 1971

- Northcote: Calendar Club and Travel In Victoria
- Niddrie: Guide Dogs
- Greythorn: Bank Services
- Frankston: City Centenary . . . and Field Naturalists' activities
- Footscray: Early Melbourne photos (Nicholson St.)
- Mornington: Shire Centenary, local history
- Monash: Bank Services
- Riversdale: China Painting

CHRISTMAS DISPLAYS have been installed at Blackburn, South Melbourne, Balwyn North, Ferntree Gully, Jordanville, Dingley and Southland branches.

Note: Any queries regarding these or other displays should be directed to the Display Officer, 448 Latrobe Street, Melbourne (Phone 30 3029).



Likely lad in London

Rex Thornton, 23, transferred last month 12,000 miles — from Seymour branch to London Office, where he will spend a minimum of three years as an additional clerk. There were many applications for this appointment.

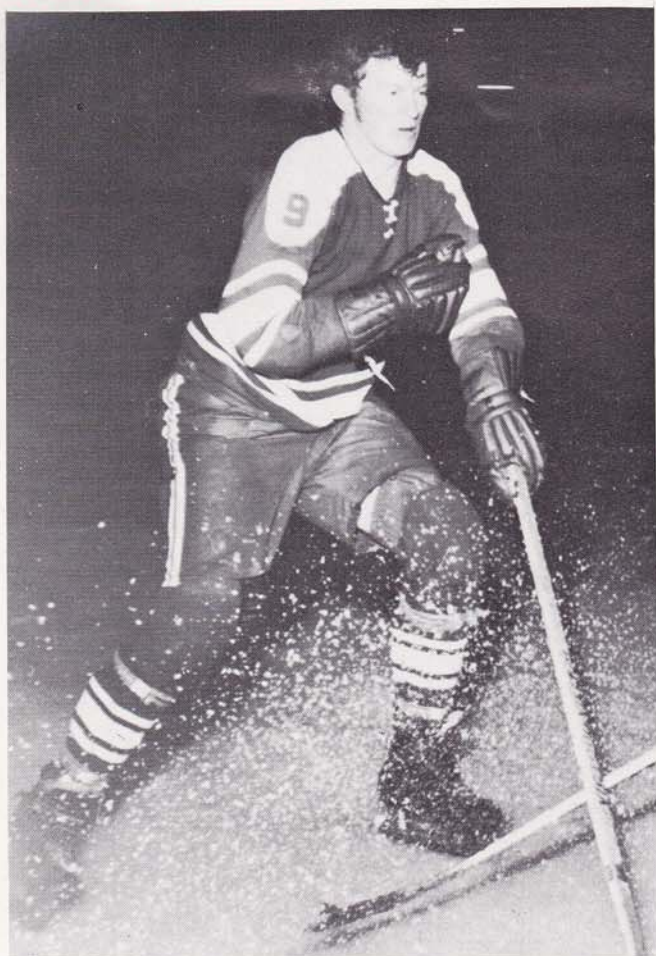
Rex, born and bred in Beechworth, worked in our branch there for five years before moving to Seymour about eight months ago. He played football for Beechworth in the Ovens/King League for six years, and was active in community service through Beechworth and Seymour Apex clubs.



HONORED FOR COURAGE

Laszlo (Leslie) Szabo, a clerk in the Chief Accountant's Department, was recently awarded the "Cross of the Combatants of Europe" by the Confederation of European War Veterans. Laszlo's medal and citation honor his courage displayed during service with the Royal Hungarian Army in World War Two, and his post-war efforts promoting the unification of European States.

SPORTSCOPE



Playing it cool

Graeme Percy, of Personal Loans Department, plays ice hockey — the world's fastest sport. Graeme (24 years old, 6 ft. 4 ins. tall, weighing 14 stone 7 lbs.) is a burly defender for Ringwood Rangers in the A Grade competition of the Victorian Amateur Ice Hockey Association. He has been with the Rangers since they first formed five years ago. This year he managed the victorious Victorian B Grade side in Sydney. The next ice hockey season starts in April. Graeme commends the sport to all who seek an exciting new way to occupy long winter evenings.

Useless knowledge

The selection of useless information in our last issue was greeted with the keenest apathy. We are thus encouraged to offer further facts for quiz entrants and collectors of trivia:

- When writing to an Emperor, the correct form of address is "Sire".
- If you walk from one end of a Jumbo jet to the other, you cover a greater distance than the Wright brothers travelled in the world's first plane flight at Kitty Hawk, North Carolina in 1903.
- The song "Friends" — mimed by Zig and Zag in their TV series — was actually sung by Jimmy Edwards and Tommy Steele.
- A snail can travel at the speed of 3 inches per minute, according to researchers at the University of Maryland.



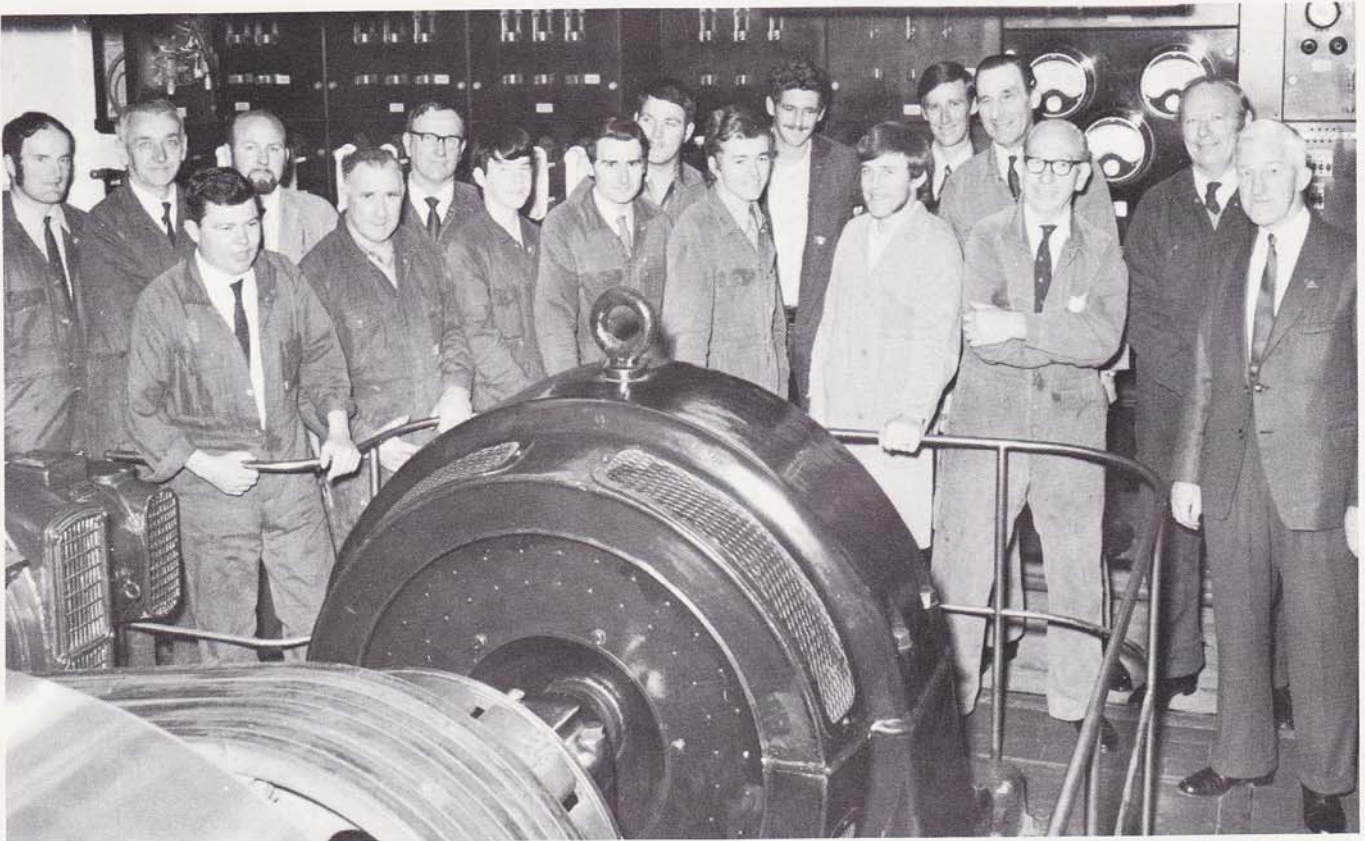
40 mph on foot

Barefoot water skier Ivan Bendschneider kicks up a fine spray at Caribbean Gardens, Scoresby. Ivan, an accountant at Fitzroy North branch, has been a water skier for 11 years. He has mastered slalom and barefoot ski-ing, including the difficult deep water barefoot start. Ivan has shared his interest in a humane way; he has virtually pioneered the training of BLIND people to a competent level of water ski-ing. He has trained many members of the Royal Victorian Institute for the Blind during weekends of camping and ski-ing at Yarrowonga, Rushworth and Nagambie. One of Ivan's blind "pupils" was John Keast, the switchboard instructor who took part in a recent Elizabeth Street display. FOOTNOTE: Ivan Bendschneider married money — Marion Money, formerly of relieving staff.

PUZZLES

1. **MAKE A DAY OF IT:** Change the word DAWN to the word DUSK in six steps. Alter one letter at each step, and make a new word each time.
2. **CURIOUS COINAGE:** In the country of Banjovia, the planka is worth four cents. The plinka, on the other hand, is worth as much as a planka plus a plonka. A planka and a plinka are equal to five plonkas, and a plinka and a plonka make a plunka. How much is each unit worth?
3. **MISS WYATT'S VARIATION:** In our last issue we showed how to change WORK into PLAY in seven moves, changing one letter at a time and making a new word each time. One of our readers, Miss L. H. Wyatt (ex-officer), then sent in a variation, showing how the puzzle could be solved in THREE moves. What was the wily Miss Wyatt's answer?

ANSWERS ON PAGE 11



THE S.S.B. FIXIT FORCE: Here are the versatile Engineers — pictured in a section of head office basement. Left to Right: Len Gartland, Gerry Veldwyk, John MacDonald, Jim Walker, Robert Fletcher, Keith Greenough, Ian Reid, Ron Storie, Barry Pignolet, Ray Landrigan, Russell Wilson, Alan Rayment, John Smith, Bern. Sparkman, Albert Ross, Phil. Aubrey, Edgar Roberts (Bank Engineer). Not Shown: Kevin King (absent through illness).

Our Ingenious Engineers

YOU NAME IT, THEY FIX IT...

- "The lift door is jammed."
- "One of our lights is on the blink."
- "I've dropped my ring down the (er) handbasin."
- "The branch time clock won't switch off."
- "The cafeteria washing machine has broken down."
- "My intercom phone is dead."
- "Our water radiator is cold."

Trouble calls like these flow in steadily to "The Engineers" — our expert Mr. Fixits hidden away in head office basement. "Engineers" is a broad title, because most of these skilled tradesmen are electricians and plumbers. They literally keep the Bank running, because they control and maintain all head office power supplies, lighting, heating, lifts, air conditioners, intercom phones, alarm systems and carrier tubes. Additionally, the Engineers handle all electrical and plumbing repairs at city and suburban branches (totalling more than 2200 jobs a year) — and they regularly service the alarm systems at suburban and country branches and agencies. (This last job keeps two men permanently busy.) One of the biggest,

most complex projects ever completed by the "basement brigade" was the wiring of the new computer department and its air-conditioning supply.

Proof of the outstanding efficiency and versatility of our Engineers is the fact that the Bank does not employ outside tradesmen for mechanical, electrical or plumbing work.

Descend into the head office basement machinery area and you feel as if you are in the engine room of an ocean liner; there are pipes, pumps, generators and switchboards — all whistle-clean.

NERVE CENTRE is the massive electrical switchboard. It carries an average daily power load of 415 volts, 3-phase, 350 kilowatts. (Compare this with your home switchboard which carries 240 volts, 1-phase, 3.6 kilowatts.) An additional power supply was recently installed to provide 350 amps. solely for our computers and associated air-conditioning plant.

POWERFUL VENTILATING FANS send filtered, cooled, washed air to various outlets on the lower floors.

A GIANT AIR TURBINE provides suction for our pneumatic tube carrier system operated from Correspondence Department.

TWO DIESEL ENGINE GENERATORS are kept constantly ready to generate emergency power in the event of black-outs or strikes.

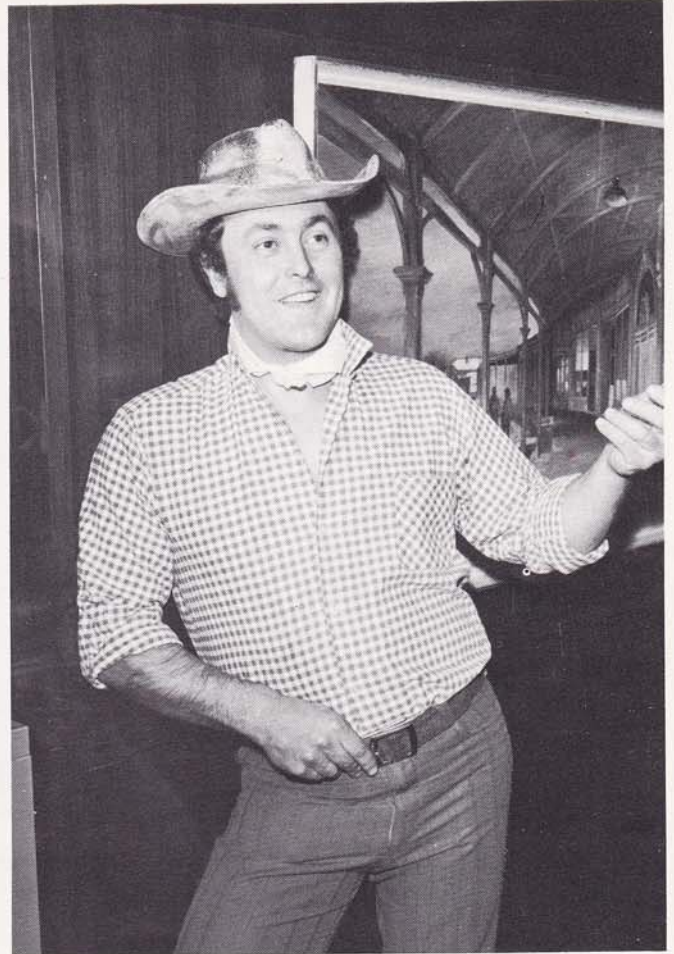
THREE OIL-FIRED BOILERS feeding into powerful pumps provide hot water for office radiators in winter — and also operate the "hot air curtains" at main entrances to Elizabeth Street banking chamber.

TWO OTHER BOILERS supply hot water to the cafeteria and all washrooms.

MASTERMIND of the S.S.B. maintenance team is Edgar Roberts, the Bank Engineer, who joined as an apprentice in 1925. He is assisted by Bernard Sparkman and Phil Aubrey. Ed. started at the bottom — the basement — and has stayed there for 46 years. But throughout his career he has walked "The Corridors of Power".



EQUESTRIENNE: Lili Deseo, 21-year-old clerical assistant at Hawthorn North, pictured here with her champion hack "Billy Bayrum," is a seasoned horsewoman and has collected many awards. At Royal Melbourne Show this year Lili came first in the Senior Pair event and first in the Senior Team of Three Riders. Her fellow riders in these events were Kerryn Smith (Mount Waverley branch) and Graeme Cameron, a teller with the ANZ.



JOHN LIDGERWOOD (Head Office Business Promotions Officer) recently played the leading role in a successful production of the Australian musical **BUSHTOWN** at Camberwell Civic Centre. He posed in costume for this photo, taken against an S.S.B. calendar painting of a country town. John returned to the Bank late last year after an Australian tour with "My Fair Lady". He recently commenced his third season with the State Concert Orchestra — as male lead singer in performances given at country centres.



FLYING ACCOUNTANT: John East (centre), accountant at Kingsville branch, is a keen and skilled flyer of light aircraft. He is a member of the Fogarty's Field Aero Club near Melton. This picture was taken at the TAA Essendon terminal after John had successfully completed a training flight with instructor Richard Dockley (right). John has been a sparetime pilot for more than 18 months. He says "Flying is an ideal way of getting away from it all."

PUZZLE ANSWERS

(From page 9)

1. DARN, DARK, MARK, MURK, MUSK, DUSK.
2. Plinka is 6 cents. Plonka is 2 cents. Plunka is 8 cents.
3. WORK, PORK, PRAY, PLAY.

BRANCH OF THE MONTH

Boom Bank in 'Babyland'

So many babies are being born at Mulgrave (between Glen Waverley and Springvale) that a local health centre sister recently had to retire prematurely, because of over-work.

This mushrooming municipality is in the centre of Australia's highest birthrate region.

And the S.S.B. has a thriving "baby" there — our branch at Brandon Park shopping centre. This branch broke all records in its first year (ended October, 1971). Balances topped \$1.1 million and accounts climbed to more than 4500.

About one-third of residents around Brandon Park are migrants — mainly from England.

When you enter our branch you notice toys neatly arranged in part of the customer area. These are provided to keep youngsters occupied while mothers are busy at the counters.

New homes are appearing in the district at the rate of about 30 per week, and the new Mulgrave Bypass, scheduled for early 1973, will bring much more car traffic to Brandon Park. Extensions to the shopping centre are planned.

Brandon Park



DON ROSS, manager of Brandon Park branch since it opened, comes from a banking family. His main outside interests are running a Boys' Club in Clayton, and helping to manage the promotion of Brandon Park centre. He has two sons, aged 13 and 11, and 'a very helpful wife who assists with all community affairs in which the family is involved'.



Meet the Staff

BRANDON PARK STAFF: Names, ages, positions and interests are, **BACK ROW** (left to right): Denys Fallon, 19, teller (motor-cycling, badminton, reading); Kevin Risely, 27, accountant (tennis, squash, gardening); Don Ross, manager; Gil Riscalla, 26, senior clerk (tennis coaching, squash);

Peter Richardson, 19, teller (football, cricket, swimming). **FRONT ROW** (left to right): Yvonne Stack, 20, relieving staff (home interests); Heather Porritt, 18, clerical assistant (music, football); Marilyn Jenkins, 18, clerical assistant (basketball, trots, parties). **NOT SHOWN** (on leave): Robinette Emonson, 22, clerical assistant (football, hockey).

AROUND THE BRANCHES

— with Joan Freeman



NATHALIA BRANCH STAFF, L. to R.: Mr. K. A. Scolyer, Miss L. E. Binger, Mr. G. R. Sullivan and manager Mr. L. R. Walton.

NATHALIA

50 Years Up

Manager, Lloyd Walton, and his staff recently had a very busy day celebrating the 50th anniversary of the S.S.B. coming to Nathalia. For those who don't know the area, Lloyd tells us the town of 1500 people is situated on the Murray Valley Highway, 140 miles from Melbourne, and is within 12 miles of both the Murray and Goulburn rivers. It's the centre of a large irrigation area and in close proximity to a vast fruit-growing district.

The branch's very successful day started at 9.30 a.m. when a birthday cake was cut by Mrs. M. Coupar, who has held an account at the branch since October 18, 1921. Throughout the day all of the many visitors to the bank received a piece of birthday cake and a souvenir pencil and reminisced over the display of early photos of the town.

The celebrations concluded with a 4.30 p.m. function attended by the Shire President and other local dignitaries. The Shire Council also sent a very complimentary letter to Mr. Walton, congratulating the bank on its 50th birthday and thanking him for the service and courtesy they had always received.

CLIFTON HILL

Books for Migrants

About 80 per cent of the children attending the Clifton Hill State School are migrants and, as can be imagined, the language difficulties are great. The Headmaster feels one of the best ways to overcome the problem is to have an extensive Australian library and our Clifton Hill manager, Lloyd Jones, has come to his assistance by donating several Australian books, including the works of Banjo Patterson and "The Magic Pudding".

BEECHWORTH

Jugged Hare!

Sorry, just couldn't resist that pun. Beechworth manager, Mr. John Hare, goes to gaol regularly once a week—not usually considered a desirable practice for a bank manager. However, it's all in a good cause. John, who is one of the foremost boxing administrators in Victoria and managed our last Commonwealth Games boxing team, is teaching the gentle art of self-defence to inmates of the Beechworth Training Prison and visits them once a week. Since his arrival in Beechworth last May he's also established a gymnasium for the young lads of the town.

GEELONG

Christine's a Winner

Christine McDonald (below), a member of our Geelong staff, is an accomplished show jumper in her spare time and has had numerous successes in country shows. Here she and "Socks", whom she owns and trains, are shown competing at Geelong Show, where she won the Geelong District Fox Hunter competition.



Mrs. M. Coupar about to cut the Nathalia Jubilee cake.

PROGRESS IN PREMISES

NEWBOROUGH (right)
Staff Architect: R. Norris.

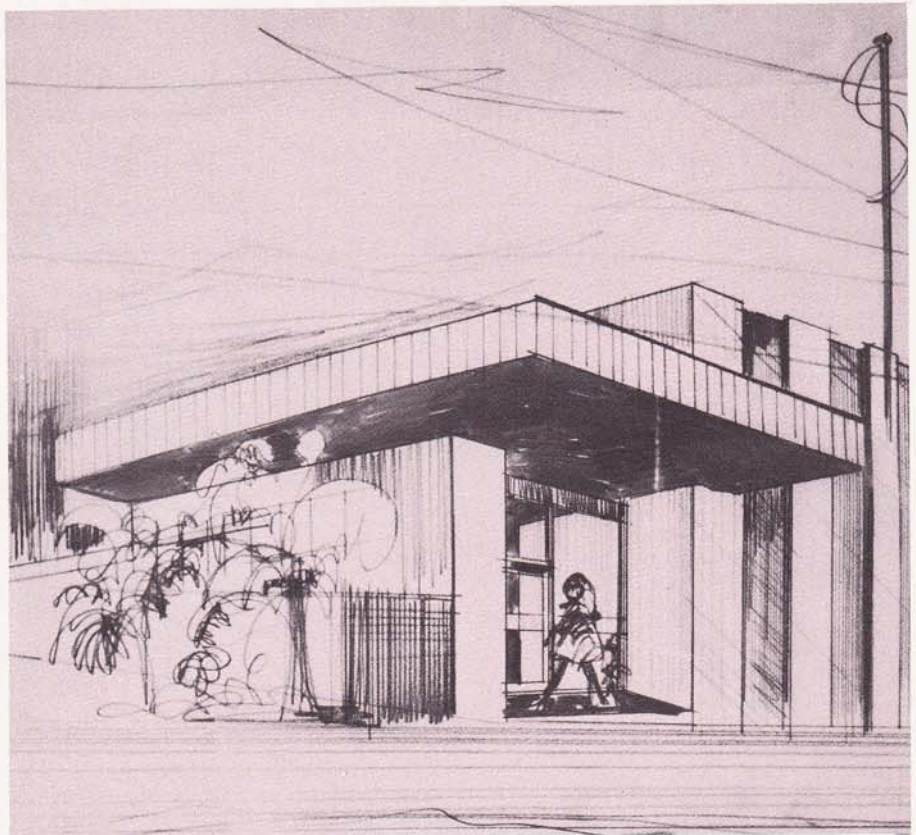
This new building now being erected on an adjoining site to our existing branch will allow for the expected development in the area. Local fawn-coloured bricks are being used for the external walls. The counters, fittings and manager's office of the new building will feature unusual redgum panelling. March is the estimated completion date.

HEATHMONT (below)

Project Architects: Keith Reid and John R. Reid.

This new building is situated at the end of a group of shops in Canterbury Road, adjacent to the railway cutting. The two-storey building culminates in a square tower, designed to be seen from all main approaches through and above the green belt of trees along the cutting. The white sand textured brick walls of the branch should provide a pleasant contrast to the greenery. A panel of six dome lights set in the roof over the main entrance will concentrate daylight in this area and offset glass reflection.

April is the scheduled opening date.



MEET OUR NEW MANAGERS



W. T. PETERING
Relieving Manager

The two Petering children, a girl nine, and boy, seven, are even more pleased than their parents with the swimming pool Bill has just had installed at their home. Bill and his wife, the former Heather Mills of Elizabeth Street, intend getting their exercise swimming this year, too. During the Fifties, Bill played several seasons' football with the Bank team.



G. A. KELLOCK
Relieving Manager

The five Kellock children, aged from 11 to two, account for most of their parents' spare time, but both Graeme and Heather work for their church and the scouts and guides. There is a real S.S.B. family. Heather, nee Ritchie, used to work in the Insurance Department; her father, Bill, was a well known manager, and her brother, Ewen, is also a new manager.



B. R. MOORE
Systems Officer, E.D.P. Planning

Most of Barrie's bank service has been in the E.D.P. department and he finds the work absorbing. A keen sportsman, he plays golf and squash in summer and on winter Saturdays coaches a junior lacrosse team in the mornings and plays the game himself in the afternoons. He and his wife have a 19-month-old son.



I. C. W. STEWART
Relieving Manager

Ian and his wife both love swimming and the beach. As they live at Mornington, near Fisherman's Beach, they find plenty of opportunity to enjoy the water and for Ian to go fishing. He also enjoys golfing on the picturesque Mornington course.



E. T. RITCHIE
Second Officer, Provident Fund

Ewen and his wife (the former Wendy Tardif of accountant's department), have two sons, aged eight and six, and a 14-month-old baby daughter. The family are all fond of music and at present, Ewen, Wendy and the two boys are all learning the piano. Ewen is a B. Com of Melbourne University.



W. A. ELLIS
Ringwood North

The manager of our newest branch, Bill is a keen golfer and foundation member of the new Churchill Park Golf Club. He and his wife share an interest in music. Bill has conducted a church choir for about 20 years in which his wife sang. Three sons, 15, 13 and nine, make up the family.



K. D. McCOLL
Thornbury North

Ken has recently built a new home at Rosanna and is still pretty busy creating his garden. The house overlooks two golf courses and Ken is looking forward to some golf in the future. He's an executive officer for a Friendly Society which takes a lot of his spare time. He and his wife have a family of three daughters.



J. A. RIGBY
Supervisor, Elizabeth Street

Most weekends, John and his wife leave the noise and bustle of the city for the more peaceful surroundings of his father-in-law's farm at Kernot, South Gippsland. John finds the farm work also keeps him fit. Much of his weekday spare time is occupied by his work as an S.S.B. Division A.B.O.A. committeeman.



R. CAMILLERI
Relieving Manager

Ron, who hails originally from Malta, speaks six languages and had 14 years' experience in Barclay's Bank, London, before coming to Australia. He recently resigned from the committee of a social club he worked for for a number of years. Keeps fit playing squash and enjoys billiards. He and his wife have a 13-year-old son.



P. G. BOURKE
Portarlington

Flying is Pat's favorite recreation. He and a friend share a light aircraft and most of their weekends and holidays are spent in the air. The Bourkes' three daughters, aged from 14 to 10, and son 12, all vie for their turn in the plane. Carpentry and metal work are other hobbies of Pat's, and he made most of the furniture in their previous home.

NEWLYWEDS



◀ A toast to each other from newly married Mr. and Mrs. Norman Eagles. Frankston Pines Presbyterian Church was the venue for the wedding. Mrs. Eagles, nee Barbara Goldsmith, works in Legal Department.



▲ Malcolm Anderson and his bride, the former Wendy Hocking, leave Christ Church of England, Ormond. The guard of honor was provided by Wendy's cub troop, the 6th North Moorabbin. Malcolm is the senior D.P. audit officer and Wendy an Elizabeth Street teller.



◀ Mr. and Mrs. John Shorten sign the register at St. Fidelis' Church, Moreland following their marriage. Mrs. Shorten was formerly Margaret Hickey of Correspondence.